

RF
RED FORT®
WORK WEAR



QUALITY | SAFETY | COMFORT



www.redfortworkwear.com


GLOBAL PRESENCE



UAE, USA, UK, Saudi Arabia, Qatar, Oman, Spain, Ireland, Algeria, Nigeria, Ethiopia, Singapore, Greece, Kazakhstan, Malaysia, Sudan, South Africa and Germany.

CONTENT

About Us	01
Vision and Mission	02
AutoCAD Representation	03-04
Safety Workwear	05-06
Flame Resistance Clothing	07-08
Inherently Flame Resistance Premier Clothing	09-10
Scrub Suit & Lab Coat	11-12
Hi-Visible Clothing	13-14
Winter Clothing	15
Tailor Made Customisation	16
Fire Fighting Suit	17
Fire Proximity Suit & Fire Entry Suit	18
Molten Metal Splash Protection Clothing	19
Electrical Safety Clothing	20
Chemical Protection Clothing	21
ESD Clothing	22
Rain Wear	23
Safety Shoes / Boot	24-26
Safety Products	27-32
Certificates	33-34
Our Valuable Customers	35-36



ABOUT US



Red Fort PPE Industries is an ISO 9001:2015 certified company with over two decades of experience. Our expertise is known throughout the world as one of the leading manufacturers in India. Quality, Integrity, and Customer Service are key values we uphold. The uncompromising quality of our products is our hallmark. In Mumbai, India, we have our headquarters, and our factory lies on the outskirts of the city. In addition we have an overseas office in Dubai, UAE.

As a **Red Fort PPE Industries** team, we are dedicated to quality, consistency, customer satisfaction, and welfare. Since the beginning, we have been driven by our passion for meeting an industry need while ensuring people's safety and comfort. Customer satisfaction is our ultimate goal and every member of our team complies with principles of ethical business practices, respect for individuals and social responsibility.

In order to maintain the standard in our industry and ensure quality and comfort for our customers, all of our vendors are OEKO- Tex certified.

Redefining the standard with the precision of artwork comprises the drive to meet the International standard adherence and inspire you towards Quality, Safety, and Comfort.

- By **Red Fort PPE Industries.** 



VISION

To become a benchmark in the workwear manufacturing industry and recognized for the integrity of our people. The ethic of our business practices and the quality of our service.

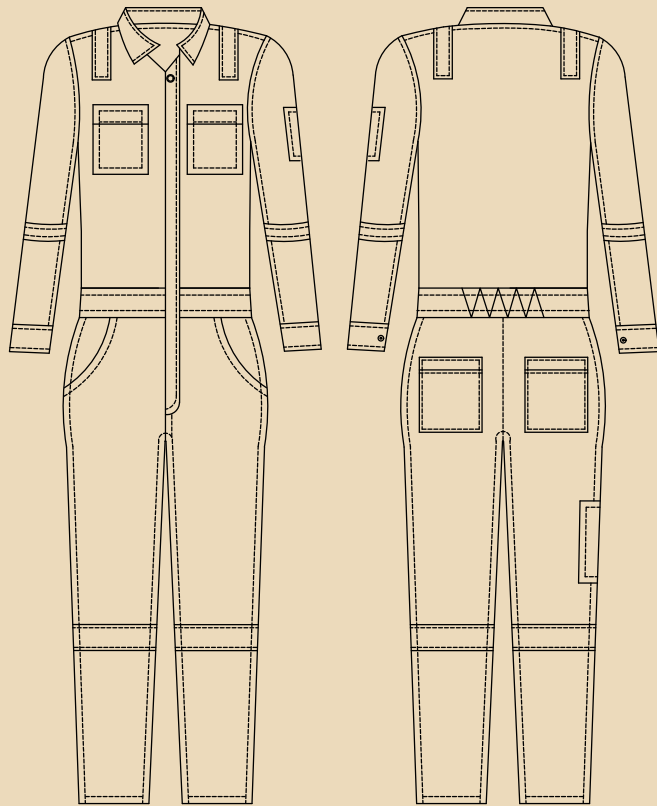
To enhance the safety awareness amongst the people and also mitigate the risk by providing exceptional options for safety. Customer delightment is what we are delighted about.

MISSION

Committed to providing the highest quality workwear built for safety, reliability and strength to our customers and markets that we serve.

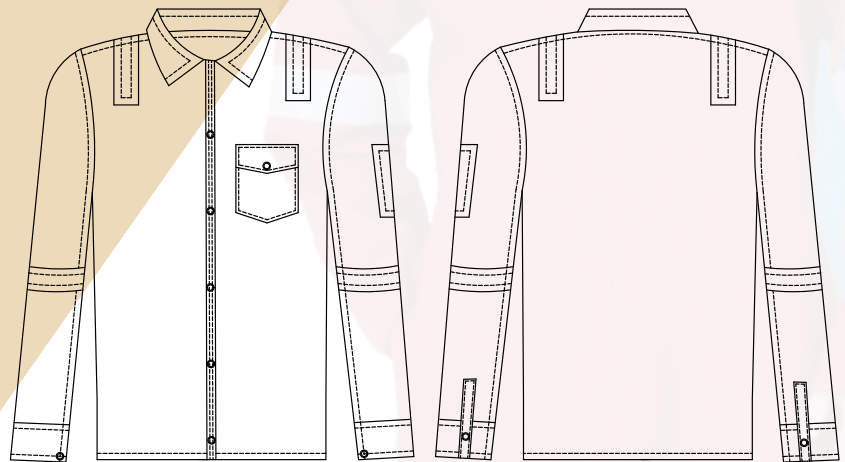
No one should lose their life due to inappropriate safety equipment. We are doing our best by constant innovation to make people safe, as they provide safety to us.



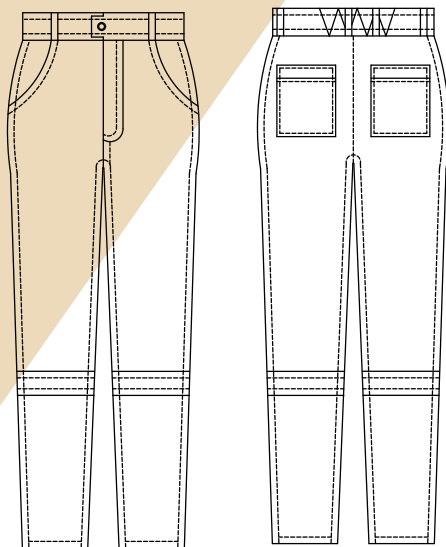


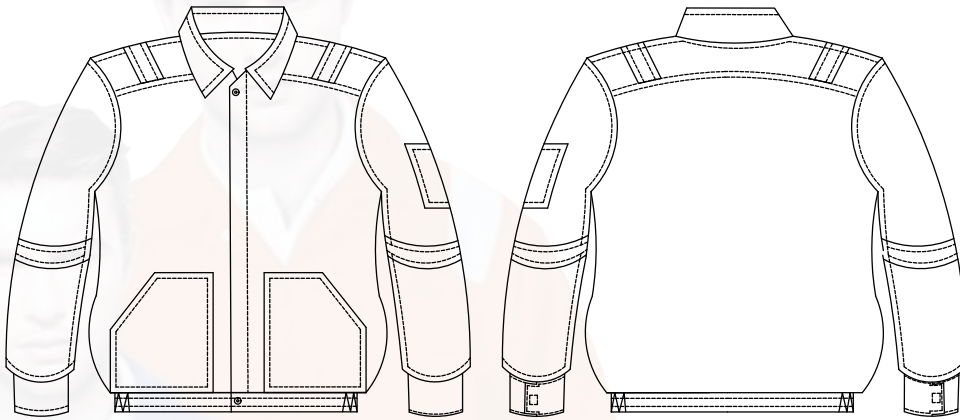
COVERALL

SHIRT



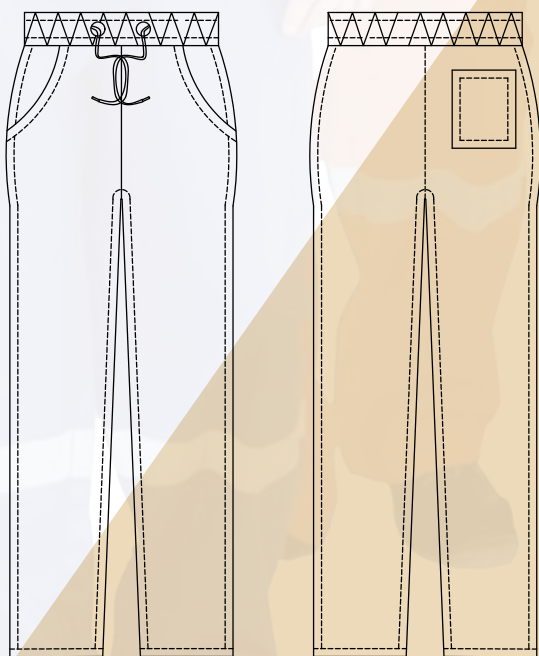
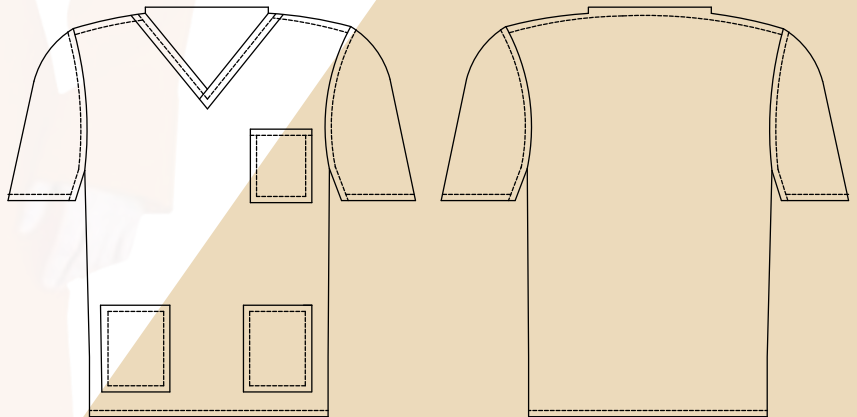
PANT





▶ **WINTER JACKET**

SCRUB TOP ◀



▶ **SCRUB PANT**



Construction Site



Mining Industries



A) Description

We have a premier range of Workwear that adds safety, value, and quality to your standard. All our workwear range meets the ergonomics standard and comfort to the wearer.

B) Silent Features

- Full Sleeves
- Two Chest Pockets
- Two Back Pockets
- One Sleeve Pocket
- Tool Pocket on Right Leg
- Pen Pocket on Sleeves
- Elasticized Waistband
- Two Radio Loops
- Shoulder Pleats for freedom of movement and comfort

C) Fabric Options

- Cotton ■ Polyester Cotton ■ Cotton Polyester
- Polyester ■ Polyester Viscose & Customized



D) GSM Available

180 | 200 | 220 | 240 | 250 | 260 | 280
300 & customized.

E) Reflective Tape



F) Testing & Certification

• EN ISO 13688 : 2013



G) Colours

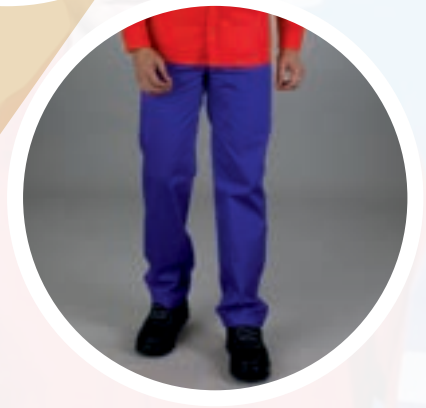


Offshore



Shipping

FLAME RESISTANCE CLOTHING



Welding Industries



Oil and Gas



A) Description

Flame resistance (FR) safety workwear is our Forte! Various blends, composition, designs, patterns, and customisation according to the customer's requirement is the strength of Red Fort.

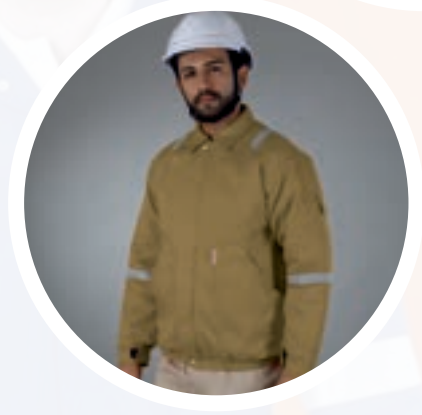
B) Silent Features

- Full Sleeves
- Two Chest Pockets
- Two Back Pockets
- One Sleeve Pocket
- Tool Pocket on Right Leg
- Pen Pocket on Sleeves
- Elasticized Waistband
- Two Radio Loops
- Shoulder Pleats for freedom of movement and comfort

C) Fabric Options

- 100% Cotton FR ■ 98% Cotton FR 2% Anti static
- 88% Cotton FR 12% Nylon & Customized

FLAME RESISTANCE CLOTHING



D) GSM Available

220 | 240 | 250 | 280 | 310 & customized.

E) Reflective Tape



F) Testing & Certification

- EN ISO 11612:2015
- EN ISO 11611:2015
- EN 1149-5: 2018
- IEC 61482-1-2 : 2018
- EN 13688:2013
- NFPA 2112-2018



G) Colours

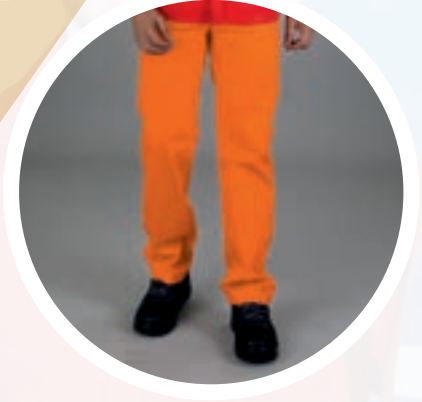


Steel Industries



Mining Industries

INHERENTLY FLAME RESISTANCE



Oil and Gas



Petrochemical



A) Description

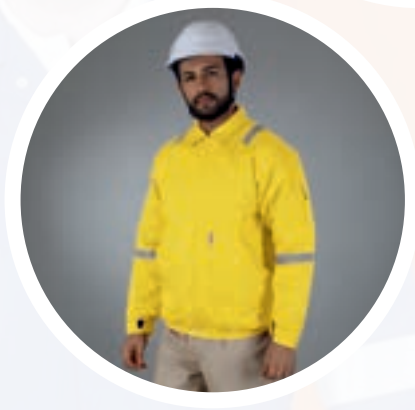
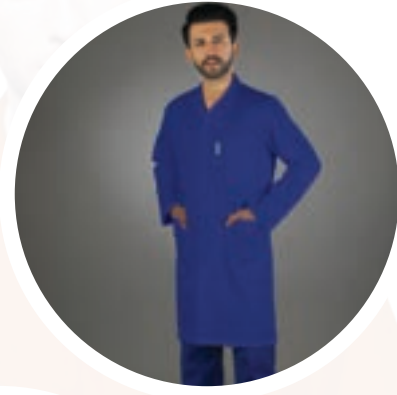
Soft finish work wear with a great fit and branded zips throughout. Zippers are covered by fabric on the inside, so nothing but soft protective material comes in contact with your skin. Major seams are double or triple-stitched and stress points are bar-tacked for strength.

B) Silent Features

- Full Sleeves
- Two Chest Pockets
- Two Back Pockets
- One Sleeve Pocket
- Tool Pocket on Right Leg
- Pen Pocket on Sleeves
- Elasticized Waistband
- Two Radio Loops
- Shoulder Pleats for freedom of movement and comfort

C) Fabric Options

- Meta Aramid (IFR) ■ Modacrylic ■ Lyocell
- Lenzing FR ■ FR Viscose & many other blends.



Drilling & Mining



Aviation Industries

D) GSM Available

150 | 160 | 180 | 200 | 220 | 230
250 & customized.

E) Reflective Tape



F) Testing & Certification

- EN ISO 11612 : 2015
- EN ISO 13688 : 2013
- NFPA 2112-2018
- IEC 61482-1-2 : 2018
- EN 17353 Type B2



G) Colours



SCRUB SUIT



Laboratory



A) Description

Uniforms made with durable and breathable fabric for all-day comfort and all-year stylishness. Our uniforms are extremely functional with pockets and button-down nurse uniforms with a variety of neckline options so they will make you look stylish.

B) Silent Features

- Half Sleeve / Full Sleeve
- Variety of Necklines
- One Chest Pocket
- Two down pockets
- Elasticized waistband

C) Fabric Options

- Polyester Viscose ■ Polyester Cotton
- Cotton & Customized

LAB COAT



D) GSM Available

150 / 190 / 200 & customized.

E) Testing & Certification

- EN ISO 13688 : 2013



F) Colours



Hospitalities

HI-VISIBLE CLOTHING



Railway Workers



Construction Workers



A) Description

Providing safety in Hi visibility to look upon in the dark and alert in the light. We design the garment in many patterns such as Vest Jacket, Jacket with hood and in the form of full body coverage overall.

B) Silent Features

- Sleeve-less & Full Sleeve
- Two Chest Pockets
- Two Back Pockets
- One Sleeve Pocket
- Tool Pocket on Right Leg
- Pen Pocket on Sleeves
- Elasticized Waistband

C) Fabric Options

- Polyester ■ Polyester Cotton
- Cotton Polyester & Customized



D) GSM Available

60 / 90 / 120 / 220 / 240 & customized.

E) Reflective Tape



F) Testing & Certification

- EN ISO 13688 : 2013
- EN ISO 20471 : 2013
- IS 15809 : 2017



G) Colours : Fluorescent



Mining Industries



Aviation Industries



A) Description

Excellent collection of the Winter Jacket including Hooded Jackets, Utility Jackets insulated outerwear. We ensure to make you warm and comfortable in the breezy & foul weather.

B) Silent Features

- Full Sleeves
- One Chest Pockets
- Two Down Pockets
- One Sleeve Pocket
- Elasticized Waistband

C) Fabric Options

- Cotton ■ Polyester Cotton ■ Polyester
- Cotton Polyester ■ FR ■ IFR ■ Denim

D) GSM Available

150 | 180 | 200 | 220 | 240 | 250 | 260 | 280
300 & customized.

E) Reflective Tape

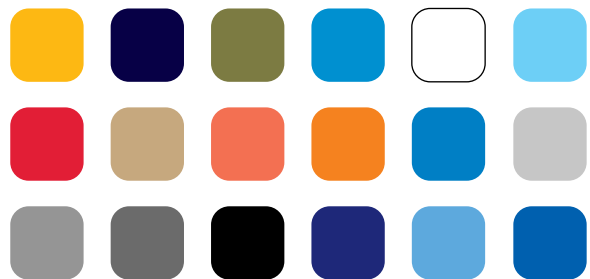


F) Testing & Certification

- EN ISO 11611:2015
- EN 1149-5: 2018
- EN ISO 11612 : 2015
- EN ISO 13688 : 2013
- NFPA 2112 :2018
- IEC 61482-1-2:2018
- EN ISO 17353 Type B2



G) Colours

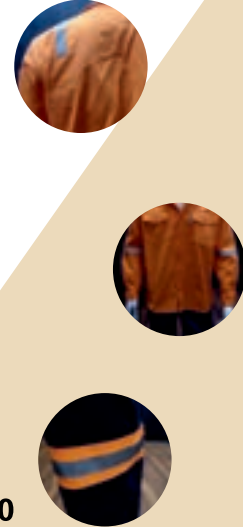




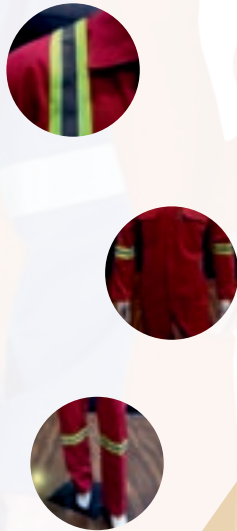
RT-RFWW-0020



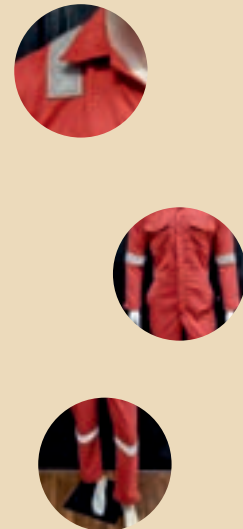
RT-RFWW-0020-30



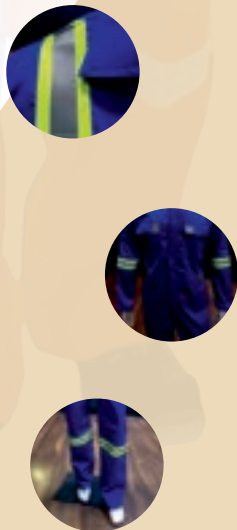
RT-RFWW-0030



RT-RFWW-0050



RT-RFWW-0070



We make customisation in Designs & Patterns with the options of Zippers, Retro Reflective Tape, Snap Closures, and Hook & Loop etc.

FIRE SUIT



The outer structure of the suit is made with a blend of inherently flame resistant fiber having durable oil and water repellence which is universally accepted to strengthen the fabric against Heat & Flame backed with PTFE membrane & Thermal protection insulation quilted to the non-woven flame resistant fabric. Which can be said to be a complete four layers of Structural Fire Fighting Gear.

Our Structural Fire Suit comes with Protective Accessories which are certified to the latest European Standards.

Protection to the Body	Jacket & Trouser	EN 469 : 2020
Protection to the Head	Fire Fighting Helmet	EN 443 : 2008/NFPA1971
Protection to the Face	Balaclava Hood	EN 13911 : 2017
Protection to Hands	Fire Fighting Gloves	EN 659 2004+A1:2008
Protection to the Foot	Fire Fighting Rubber Boots	EN 15090+A1:2008



STANDARD WE PROVIDE

- EUROPEAN STANDARD - CE EN 469: 2020
- AMERICAN STANDARD - NFPA 1971: 2018
- RALPH MANIKIN - EN 13506: 2017
- MED Approved - WHEELMARK - 96/98/EC
- Module - D/ Type III

Applications :

Fire fighting, Search & Rescue, Emergency Response & Marine



Structural Fire Fighting Suit Jacket & Bib certified to the latest standard CE 469: 2020 type III - Ralph Manikin tested.



FIRE ENTRY SUIT

Aluminised Fire Proximity Suit reflects 95% of heat and gives complete protection from immensely high temperatures and helps to do the fire fighting and rescue operation. This suit is constructed according to the Indian, American & European Standards.

Offering safety in multiple layers of flame resistance insulation ranging from 2 layers to upto 8 additional layers.

Our Fire Proximity Suit comes along with the below Protective Accessories.	
PROTECTION TO THE BODY	JACKET & TROUSER / COVERALL
PROTECTION TO THE HEAD	FIRE FIGHTING HOOD WITH HELMET
PROTECTION TO THE HAND	FIRE FIGHTING FIVE FINGER GLOVES
PROTECTION TO THE FOOT	FIRE FIGHTING SHOES

Temperature Resistance :
1400° F – 3000° F

STANDARD WE PROVIDE

- EN ISO 11612 : 2015
- EN 1486 : 2008
- NFPA 1971

Applications :

- Firefighting
- Metallurgy
- Fire Entry

Options also available

- Jacket & Pant
- Coverall / One Piece
- Apron
- Long Coat
- Gold Visor



An Indigenous blend garment gives protection against Molten metal splash, Molten Aluminum, Iron splash, High heat, and Flames as well as from the Welding Splatters.

The range offers various designs, and accessories to protect you from Head to Toe.

We also include :

- Helmet with Visor
- Gloves
- Boots

Tested & Certification

- EN ISO 11611 : 2015
- EN ISO 11612 : 2015
(A1, A2, B1, C1, **D3, E3, F1**)
- NFPA 2112 : 2018
- EN ISO 1149-5 : 2018





A) Description

Arc flash and flame resistant clothing help to protect workers from burn injuries in areas with Electrical spark, open flame, and other potential fire hazards. Our arc flash PPE offers a head-to-toe solution including garments, head protection, foot protection, hand protection and accessories.

B) Testing & Certification

- EN ISO 11612 : 2015
- NFPA 2112 : 2018
- ASTM 1959
- IEC 61482-1-2 : 2018
- NFPA 70E

C) We offer a Full Kit which includes :

- Jacket & Trouser
- Coverall
- Gloves
- Hood with Hardhat
- Face Shield
- Di Electrical Shoes

D) Range :

8 Cal - 100 Cal (HRC 1 to HRC 4)

D) Fabric Options

- Inherently Flame Resistance (IFR), FR and many others.



A) Description:

Acid Resistance clothing protects the wearer against the liquid chemical splashes. Our clothing helps to get protection from any skin irritation or burn due to chemical liquid splashes.

B) Silent Features

- Full Sleeves
- Two Chest Pockets
- Two Back Pocket
- One Sleeves Pocket
- Tool Pocket of Right Leg
- Pen Pocket on Sleeves
- Elasticized Waistband
- Two Radio Loops
- Shoulder Pleats for freedom of movement and comfort

C) Fabric Options

- Polyester Cotton and customised
- IFR Fabric Blends

D) Testing & Certificate

- EN ISO 13034
- EN ISO 13688
- EN ISO 11612

E) Colours





A) Description:

We have dynamic range of ESD clothing with multiple fabric and design options to get the wearer protected, safe and comfort.

B) Silent Features

- Full Sleeves
- Two Back Pocket
- Tool Pocket of Right Leg
- Pen Pocket on Sleeves
- Elasticized Waistband
- Two Radio Loops
- Shoulder Pleats for freedom of movement and comfort

C) Fabric Options

- Polyester Antistatic and customised

D) Testing & Certificate

- EN ISO 1149-5 : 2018

E) GSM

- 100 / 120 / 140 & Customised

E) Colours





A) Description:

Red Fort introduced variety of protective clothing to protect you from the water by providing multiple options in designs, fabrics and comfort.

B) Silent Features

- Special inner taping along stitches
- Jacket attached hood with drawstring closure
- Two pockets with flap on the front
- Front Closure with plastic zipper
- Waist adjusted by elasticized waistband
- Velcro at sleeve cuffs and trouser bottom
- Slit on rear bottom for comfort while walking

C) Fabric Options

- Polyester Tafetta fabric with Nitrile PVC coating & customised

D) Testing & Certificate

- IS 4761 : 1968
- IS 7016 : 2015

E) Colours



Reflective Tape



Safety Shoes - S3 SRC HRO

Low Ankle / High Ankle / Rigger Boot

Operative Standard : EN ISO:20345
Safety Class : S3 HRO SRC
Construction : Pu-Rubber Nitrile Outsole
Description : Genuine Export Quality Grain Leather / Full Grain Crazy Horse Leather (Water Resistant), 200J Composite / Steel Toe, Direct Injection Molded Rubber-PU Sole, Anti-perforation Textile Insole, Antistatic
Heat Resistance : Up to 300 °C (HRO)
Size : UK Range 05 to 13 (39 to 47)



RFFW 221



RFFW 821



RFFW 921



RFFW 121



RFFW 621



RFFW 321



RFFW 521



RFFW 421



RFFW 721



DK 128



DK 129



DK 125

Safety Shoes - S3 SRC

Low Ankle / High Ankle / Rigger Boot

Operative Standard : EN ISO:20345
Safety Class : S3 SRC
Construction : PU Single / Double Density Outsole
Description : Genuine Export Quality Grain Leather / Full Grain Crazy Horse Leather (Water Resistant), 200J Composite / Steel Toe, Direct Injection Molded PU Sole, Anti-perforation Textile Insole, Antistatic
Heat Resistance : Up to 120 °C
Size : UK Range 05 to 13 (39 to 47)



RFFW 221



RFFW 821



RFFW 921



RFFW 121



RFFW 621



RFFW 321



RFFW 521



RFFW 421



RFFW 721



DK 130



DK 128



DK 129



DK 127



DK 125



DK 123



DK 124



DK 126

Safety Shoes - S3 SRC - ESD

Low Ankle / High Ankle

Operative Standard : EN ISO:20345
Safety Class : S3 SRC - ESD
Construction : PU Single / Double Density Outsole
Description : Genuine Export Quality Grain Leather / Full Grain Crazy Horse Leather (Water Resistant), 200J Composite / Steel Toe, Direct Injection Molded PU Sole, Anti-perforation Textile Insole
Size : UK Range 05 to 13 (39 to 47)



9044



RFFW 121



RFFW 521



RFFW 621



RFFW 321



DK 128



DK 125



DK 131



DK 126

Gents Safety Shoes - Without Lace



RFFW 131



RFFW 132



Ladies Safety Shoes - Without Lace

Helmet



Vented / Non Vented

PVC, HDPE, ABS Material
Polymer or Nylon fitted Inner
ISI, CE & ANSI Approved



Full Brim Helmet

HDPE, ABS Material
Polymer or Nylon fitted Inner
CE & ANSI Approved & Class E



Bump Cap

Polymer (PP) or
Textile Cap with inner
ABS Inner Shell CE Approved

Respirator Disposable



FFP1 Respirator
ISI, CE Approved



FFP2 Respirator
ISI, CE Approved



FFP3 Respirator
ISI, CE Approved



N-95, R-100, P-99
P-95, P-99, R-100
NIOSH Approved

Reusable



Half Face Respirator
ISI, CE & NIOSH Approved



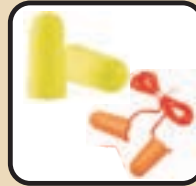
Full Face Respirator
ISI, EN & NIOSH Approved

Cartridge



OV/AG/OV+AG/Ammonia /
Methylamine/Formaldehyde /Organic
Vapor/Multi Gas/Mercury Vapor /
Chlorine Gas
ISI, CE & NIOSH Approved

Ear Plug



Disposable

Cord & Cord less Ear Plug
ISI & CE Approved



Reusable

Reusable Ear Plug with &
without Case
ISI & CE Approved



Ear Muff

Passive and Active electronic
ear muffs,
ISI, CE & ANSI Approved



Helmet Mounted

Helmet mounted Ear Muff
Passive and Active electronic
ear muffs, ISI, CE & ANSI Approved

Eye Protection



Spectacle

Polycarbonate Clear / Dark /
Amber Lens / Hard Coat /Anti-fog
and Anti-scratch lens coatings
ISI, CE & ANSI Approved



Goggle

Polycarbonate Clear / Green Lens
Hard Coat /Anti-fog and Anti-scratch
lens coating
ISI, CE & ANSI Approved



Face Shield

Polycarbonate Clear Shield
with & without Helmet mounted,
Hard Coat /Anti-fog and Anti-scratch
coating
ISI, CE & ANSI Approved

PAPR (Powered Air Purifying Respirator)



PAPR for Dust, Vapour & Gases
ATEX, CE & ANSI Approved



PAPR for Welding
CE & ANSI Approved

Autodarkning Helmet



Passive Welding Helmet
Shade Selction Manual
CE & ANSI Approved



Auto-Darkening Welding
Helmet
Shade Selction 5 to 13
CE & ANSI Approved

SAR, SCBA, ELSA & ESCAPE



SAR
Supplied Air Line System
CE & ANSI Approved



SCBA
Self Containing Breathing Apparatus
Type 1 & Type 2
ISI, CE & ANSI Approved



ELSA
Emergency Life Saving Apparatus
ISI & CE Approved



Blower
Regular & ATEX Blower
ISI, CE Approved

Spill Controls



Spill Kit for Oil
Spill Kit for Chemicals
Spill Kit - Universal

Safety Tape



Antiskid Tape
AutoGlow, Reflective Tape
Marking Tape with different
Design & Colour

Gas Detector



Portable Gas Detector, Single Gas
Detector, Multi Gas Detector with &
without pump
UL, IECEx, ATEX & CE Approved



Fixed Gas Detector
UL, IECEx, ATEX &
CE Approved

Fall Protection



Full Body Harness
ISI & CE Approved



Different Lanyards & Hooks /
Connectors
ISI & CE Approved



Retractable Fall
Arrestor (Blocks)
CE Approved



Safety Ladder with
Vertical Life line
CE Approved



Horizontal Life line Loading &
Unloading
CE Approved



Horizontal Life line for
Roof Safety
CE Approved



Safety Ladders
Aluminium & FRP
ISI Approved Quality
Raw material



Cut Resistance Gloves
PU, Nitrile & Latex Coating
CE Approved



Gloves for Impact
CE Approved



Leather Gloves
Soft & Genuine Quality
CE Approved



Cotton Knitted &
PVC Dotted Gloves



Heat Resistance Gloves &
Sleeves
CE Approved



Disposable Nitrile Gloves
CE Approved



Reusable Nitrile /
PVC Gloves
CE Approved



ESD Gloves
CE Approved

Hand Protection



General Purpose Gloves
PU, Nitrile & Latex Coating
CE Approved

Others



Lifebuoy for adults



Life Jacket



Inflatable Life Jacket with Light



Eye Wash Portable Bottle



Eye Wash with Eye Wash Shower (Combination)



Emergency Siren



Wind Sock with Reflective Tape and Stand



Electrical Insulated Tools



Electrical Rubber Mat Class A, B & C
ISI and CE Approved



Safety Cutter



Lux Meter



IR Thermo Meter



Alcohol Breath Meter



Noise Level Meter

Safety Signages



Escape Plan and Auto Glow Signages



Reflective Signages



Vinyl Signage



Outdoor Signages

Road Safety



Traffic Safety Cone



Spring Post



Convex Mirror with and without Stand



PVC / Rubber Speed Breaker



Road Blinkers, Studs, flasher



Batton Metal Detector



Road Barrier & Corner Guards

LOTO (Lock out Tag out)



LOTO for Mechanical Equipments



LOTO Tags & Posters



LOTO for Electrical Equipments

Fire Extinguishers



Fire Ball CE Approved



Fire Extinguishers - All Types ISI & CE Approved



Hose Reel Drum and Hose Box



Hose Pipes (RRL Type A & B /CP) ISI approved



AR-AFFF / AFFF Solution ISI, UL & CE Approved



Hydrant Accessories ISI approved

Body Protection



Suit for Dust Application
Type 5 & 6
CE Approved



Suit for Chemical Application
Type 3, 4, 5, 6
CE Approved



Soft Leather Welding Apron

First Aid



First Aid Box



Ambu Bag &
Neck immobilizer



Stature, Chair &
Emergency bed

Emergency Light



High beam torch &
Hand torch



Head Lamp with &
without ATEX



Emergency
Escape light

Spill Control



Safety Cans for
Hazardous Liquid



Safety Cabinets for
Hazardous Liquid



Spill Containment
Pallets

OUR CERTIFICATION

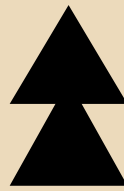
EN ISO 11612



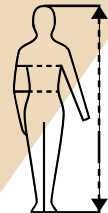
ISO 7000-2417



NFPA
2112



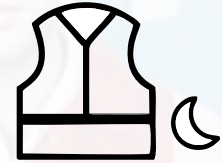
IEC 61482-2



EN 13688



EN 1149-5



EN 17353
Type B2

HRC



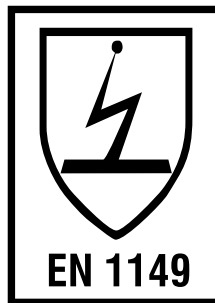
NFPA
1971



EN ISO
EN 11611:2015



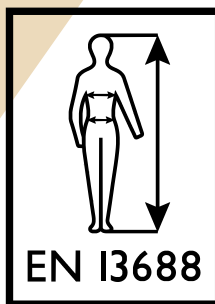
EN ISO
EN 11612:2015



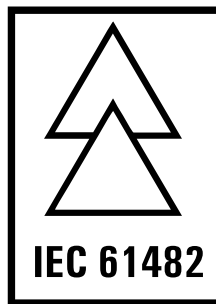
EN 1149



NFPA
2112



EN 13688



IEC 61482



EN 469:2020



EN 13506-1
2017



Our Valuable Customers





ARE YOU PROTECTED?

PERSONAL PROTECTION EQUIPMENTS



Our Brands :



SAFETY STARTS WITH ME

- 84% of employees who sustain a head injury did not wear head protective equipment.
- 50% of construction workers tend to suffer severe eye injuries during their career.
- 99% of noise induced hearing loss is preventable if proper hearing protection is used
- 25% of accidents at the workplace cause hands & fingers injuries.
- 25% of total reported disabilities are foot injuries.



RED FORT PPE INDUSTRIES PVT. LTD.

- Head Office :** 802, Damji Shamji Business Galleria, LBS Marg, Kanjurmarg (West), Mumbai - 400 078. Maharashtra, (INDIA) | Contact : +91 22 6710 0112 / 13 / 14 / 15
Email : info@redfortworkwear.com | www.redfortworkwear.com | redfortppe.com
- UAE Office :** P.O. Box 932, Office C-1, #1325E, Ajman Free Zone, Ajman, UAE
Email : info@redfortworkwear.com

CERTIFIED AS FOLLOWS

